

job name:
 type:

26" wht.wal™ ceiling spec sheet 90CRI

material

trim ring

precision CNC spun .063" aluminum. rolled bottom edge for added strength.

diffuser

.125" virgin white acrylic bottom inner lens.

optics

reflector

.050" aluminum array platform powder coat painted high reflectance (>92%) matte white.

LED

custom LED board in 3000K, 3500K, or 4000K (90+ cri standard) under normal operating conditions, the LEDs employed are rated for >50,000hrs L70 (6.8K) per IES TM-21 from LM-80 test data.

driver

integral, programmable, UL class P, class 2, universal input (120-277v), constant current, 0-10v dimming, 1% minimum dimming level, PF >.9, THD <20%, protections include open and short circuit, overload and over temperature.

mounting

designed to mount to 4 inch octagon junction box (by other).
 consult factory for installation instructions.

emergency

recommend use of inverter (by other).
 optional WREM: wired for remote EM battery (by other).



catalog number

--	--	--	--	--

size

C6326 (2ft) 26"dia X 4"ht

see page 2 & 3
 for info on
 C6338 and C6348

CCT

30 3000K

35 3500K

40 4000K

lumens

LO 2620 lm

HI 4890 lm

CL xxxx lm
 custom lumens
 consult factory
 (1310 lm
 - 4890 lm)

painting finish

AP anodized paint

BS brass

BU blue

BZ bronze

CP champagne

FB flat black

GM gun metal

MB military blue

MW matte white

OR orange

RD red

SB satin black

SS satin silver

TG textured gray

YO yellow

options

WREM wired for remote
 EM battery pack
 (by other)
 (see note above)

ELD EldoLED*

LUT Lutron*
 *consult factory

premium finish

RAL specify RAL#



job name:
 type:

38" wht.wal™ ceiling spec sheet 90CRI

material

trim ring
 precision CNC spun .063" aluminum. rolled bottom edge for added strength.

diffuser
 .125" virgin white acrylic bottom inner lens.

optics

reflector
 .050" aluminum array platform powder coat painted high reflectance (>92%) matte white.

LED

custom LED board in 3000K, 3500K, or 4000K (90+ cri standard) under normal operating conditions, the LEDs employed are rated for >50,000hrs L70 (6.8K) per IES TM-21 from LM-80 test data.

driver

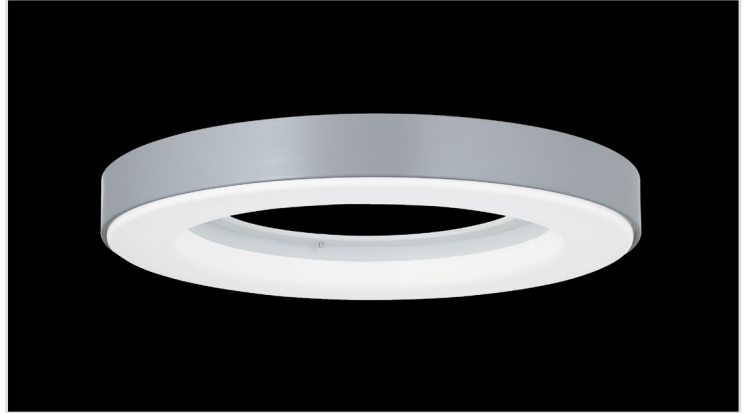
integral, programmable, UL class P, class 2, universal input (120-277v), constant current, 0-10v dimming, 1% minimum dimming level, PF > .9, THD < 20%, protections include open and short circuit, overload and over temperature.

mounting

designed to mount to 4 inch octagon junction box (by other).
 consult factory for installation instructions.

emergency

recommend use of inverter (by other).
 optional WREM: wired for remote EM battery (by other).



catalog number

--	--	--	--	--

size

C6338 (3ft) 38"dia X 5.5"ht
see page 3 for info on C6348

CCT

30 3000K
35 3500K
40 4000K

lumens

LO 2955 lm
HI 6140 lm
CL xxxx lm
custom lumens consult factory
 (1750 lm - 6140 lm)

painted finish

AP anodized paint
BS brass
BU blue
BZ bronze
CP champagne
FB flat black
GM gun metal
MB military blue
MW matte white
OR orange
RD red
SB satin black
SS satin silver
TG textured gray
YO yellow

options

WREM wired for remote EM battery pack (by other) (see note above)
ELD EldoLED*
LUT Lutron*
*consult factory

premium finish
RAL specify RAL#



job name:
 type:

48" wht.wal™ ceiling spec sheet 90CRI

material

trim ring
 precision CNC spun .063" aluminum. rolled bottom edge for added strength.

diffuser
 .125" virgin white acrylic bottom inner lens.

optics

reflector
 .050" aluminum array platform powder coat painted high reflectance (>92%) matte white.

LED

custom LED board in 3000K, 3500K, or 4000K (90+ cri standard) under normal operating conditions, the LEDs employed are rated for >50,000hrs L70 (6.8K) per IES TM-21 from LM-80 test data.

driver

integral, programmable, UL class P, class 2, universal input (120-277v), constant current, 0-10v dimming, 1% minimum dimming level, PF >.9, THD <20%, protections include open and short circuit, overload and over temperature.

mounting

designed to mount to 4 inch octagon junction box (by other). consult factory for installation instructions.

emergency

recommend use of inverter (by other). optional WREM: wired for remote EM battery (by other).



catalog number

--	--	--	--	--

size

C6348 (4ft) 48"dia X 7"ht

CCT

- 30** 3000K
- 35** 3500K
- 40** 4000K

lumens

- LO** 5040 lm
- HI** 8250 lm
- CL** xxxx lm
custom lumens
 consult factory
 (2160 lm
 - 8250 lm)

painted finish

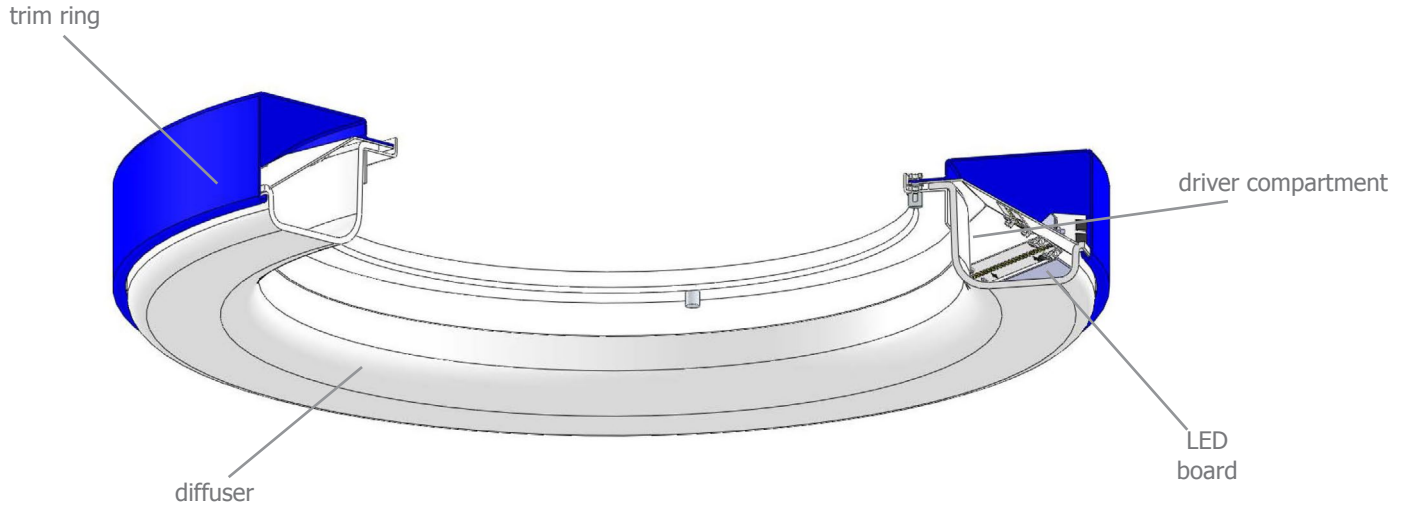
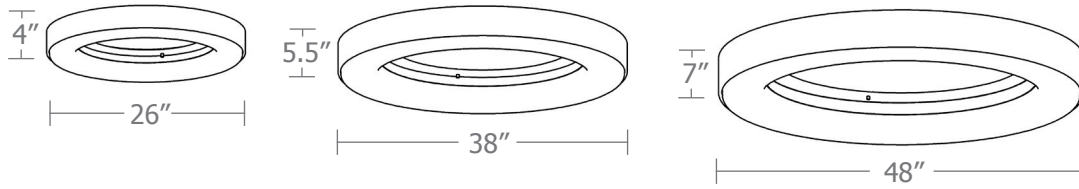
- AP** anodized paint
- BS** brass
- BU** blue
- BZ** bronze
- CP** champagne
- FB** flat black
- GM** gun metal
- MB** military blue
- MW** matte white
- OR** orange
- RD** red
- SB** satin black
- SS** satin silver
- TG** textured gray
- YO** yellow

options

- WREM** wired for remote EM battery pack
(by other)
 (see note above)
- ELD** EldoLED*
- LUT** Lutron*
*consult factory

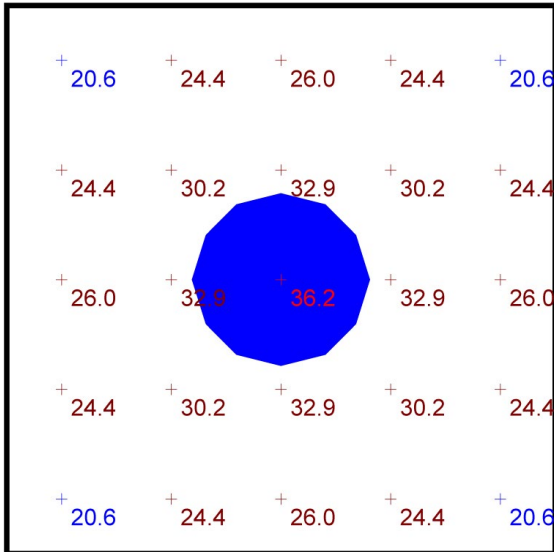
premium finish
 RAL specify RAL#





Typical Lighting Layout

Statistics						
Description	Symbol	Avg	Max	Min	Max/Min	Avg/Min
wht.wal ceiling mount	+	26.8 fc	36.2 fc	20.6 fc	1.8:1	1.3:1



Plan View
Scale - 1" = 2ft

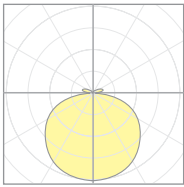
- 10' x 10' x 10'H space
- 80/50/20 reflectances
- bottom of fixture at 9'6" aff
- FC readings at 2.5' aff
- layout conducted using 38" dia. HI lumen package (6140 delivered lumens)



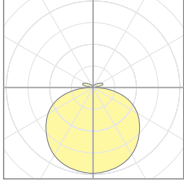
Calculation Table

The application of a Light Loss Factor is required to:

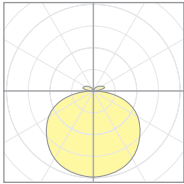
- match the lumen output for the power module specified
- incorporate the increased lumen output due to LED/Driver upgrades



19611
P6326



19185
P6338



19188
P6348

Cat No	Delivered* Lumens	Watts 120V / 277V	IES File #	LLF to be applied
C6326 LO	2620	31	19611	0.59
C6326 HI	4890	62	19611	1.10
C6338 LO	2955	36	19185	0.58
C6338 HI	6140	78	19185	1.20
C6348 LO	5040	61	19188	0.86
C6348 HI	8250	104	19188	1.40

*delivered lumens based on 4000K, 90+ cri

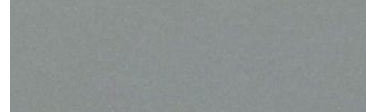
Powder Coat Paint Finishes



MW matte white



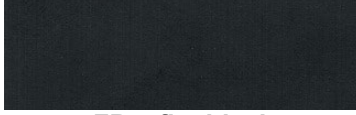
AP anodized paint



SS satin silver



TG textured gray



FB flat black



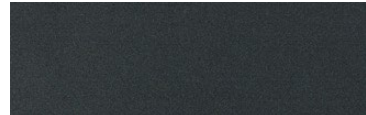
SB satin black



CP champagne



BZ bronze



GM gun metal



OR orange 2011



BU blue 5017



BS brass



RD red 3020



YO yellow 1018



MB military blue

For accurate color verification, actual finish samples are available upon request.

Premium Finishes*



RAL#

*Available on select series. Consult product submittal for availability.